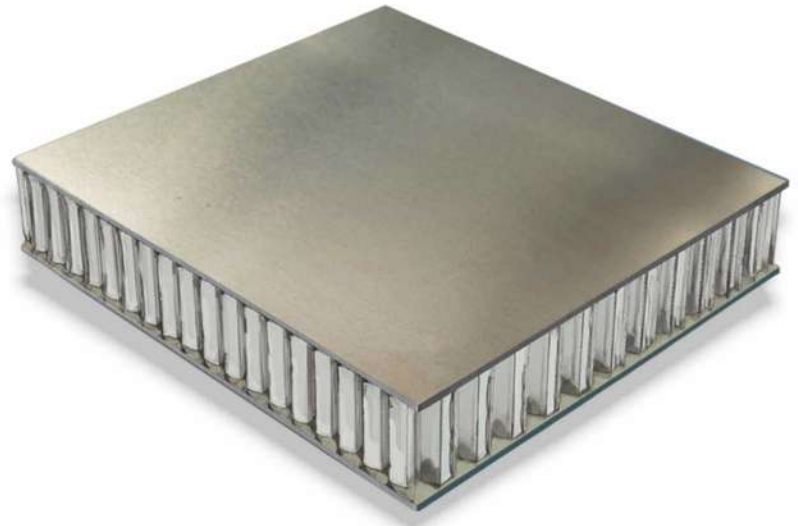


SS - ALU

SS ALU is a lightweight sandwich panel with a core in aluminum honeycomb and skins of stainless steel satin finish on both the sides. This panel is normally used as decorative part for interiors. Moreover, it is also used in architecture and design since it combines decorative and mechanical properties.

These panels can be used either for floors, ramps, lifts, engine and technical rooms and in general where anti slippery properties are required.

We also make honeycomb panels according to be needs of our clients for which dimensions and specifications are determined by our customers



Honeycomb Core type		ALU Ø9.0 - 54kg/m ³ - 3003				
Total thickness mm		10	12	15	20	25
Skin thickness mm	Top	0.8	0.8	0.8	0.8	0.8
	Bottom	0.8	0.8	0.8	0.8	0.8
Core thickness mm		8.4	10.4	13.4	18.4	23.4
Weight kg/m ²		14.2	14.3	14.5	14.7	15.0
Temperature Resistance		Approximately -40°C to +80°				
Flatness		1.0 mm per meter				
Skin grade		SS 304 / SS 306				
Finish		Hairline / Mirror				

AVAILABILITY

Standard Dimensions
1220mm x 2440mm (other dimensions available on request) Max. width 1525 mm and Max. length 4000 mm
Panel Thickness
Made to order, thickness 6 mm to 200 mm
Standard Skin Thickness
0.5mm, 0.8mm & 1.0mm (other thicknesses and finishes available)

ACCREDITATIONS



Quality Management System in accordance to ISO 9001:2015



In conformity with the EU-MED directive, European Union Marine Equipment Directory, to allow use in vessels constructed, built, registered or operated in Europe 0098



C-class division according to SOLAS II-2, Reg. 3.10



IMO MSC 61(67) Fire Test Procedures Code compliant

Fire Tested in accordance to EN 13501-1

- A2
A2-s1, d0 classification
- A2 – non-combustible
 - s1 – no smoke
 - d0 – no flammable dropping

A2